

**21<sup>st</sup> September 2019 “Red Flag” course and changes to the “Gill Cherbourg 2” race**

**Start times:** Race will be started as follows:

	<b>Warning</b>		<b>Preparatory</b>		<b>1 minute</b>		<b>Start</b>
<b>Class 6/5</b>	<b>0850</b>	Triangle point UP	<b>0855</b>	Square	<b>0859</b>	Square removed	<b>0900</b>
<b>Class 4</b>	<b>0905</b>	Triangle Point DOWN	<b>0910</b>	Square	<b>0914</b>	Square removed	<b>0915</b>
<b>Class 3</b>	<b>0920</b>	Circle	<b>0925</b>	Square	<b>0929</b>	Square removed	<b>0930</b>

This changes RRS 26.

**The Course** If the Red Flag is displayed THE COURSE is as follows:

**Start line (East to West)**

**North Head buoy, leave to port**

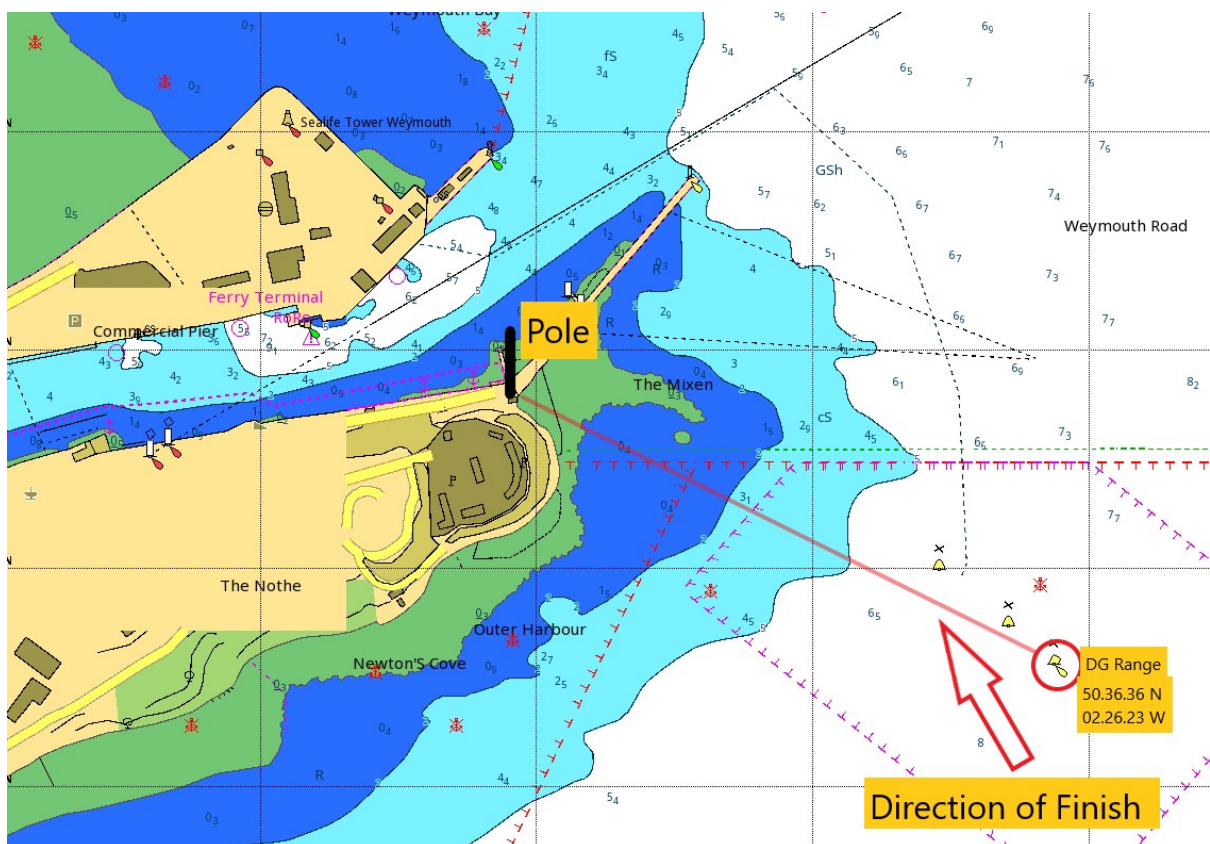
**DZ C buoy ( approx. pstn 50.32.76N, 02.04.56W), leave to starboard**

**East Shambles buoy (approx. pstn 50.31.26N, 02.20.08W), leave to starboard**

**Finishing Line (South to North) see separate diagram.**

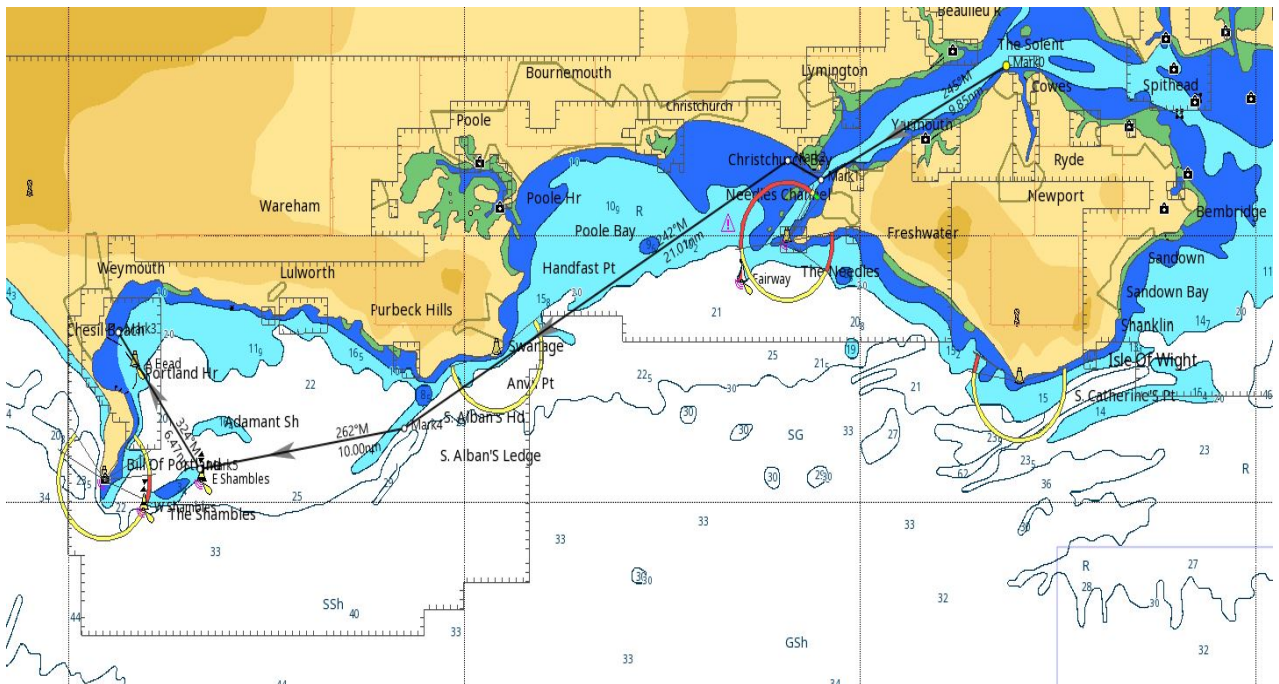
**Finishing Line.**

The line is to be taken as Line between the POLE, grey in colour, (Signal Station, Traffic) on Weymouth South Pier and DG Range SE Buoy 50 36.36N 02.26 23W leaving the buoy to starboard and leaving the remaining two buoys (SE and NW) close to starboard.



## Notice to Competitors

1. Competitors should carefully note their finishing time on a "self declaration" basis and use the online declaration as soon as possible after finishing. Alternatively, text the JOG phone 07576 882150
2. The designated watering hole is the Weymouth Sailing Club. The bar is open from 12.00 but our informal get together is scheduled at 1800.
3. Please call the Weymouth Harbour Master on VHF ch 12 or tel 01305 838423 for berthing instructions. Please also ensure you pay your berthing fees before leaving.
4. The Lulworth Firing Range is in use on Saturday and competitors should therefore stay south of 50.33.0 between Kimmeridge and Lulworth.



Not to be used for Navigation